

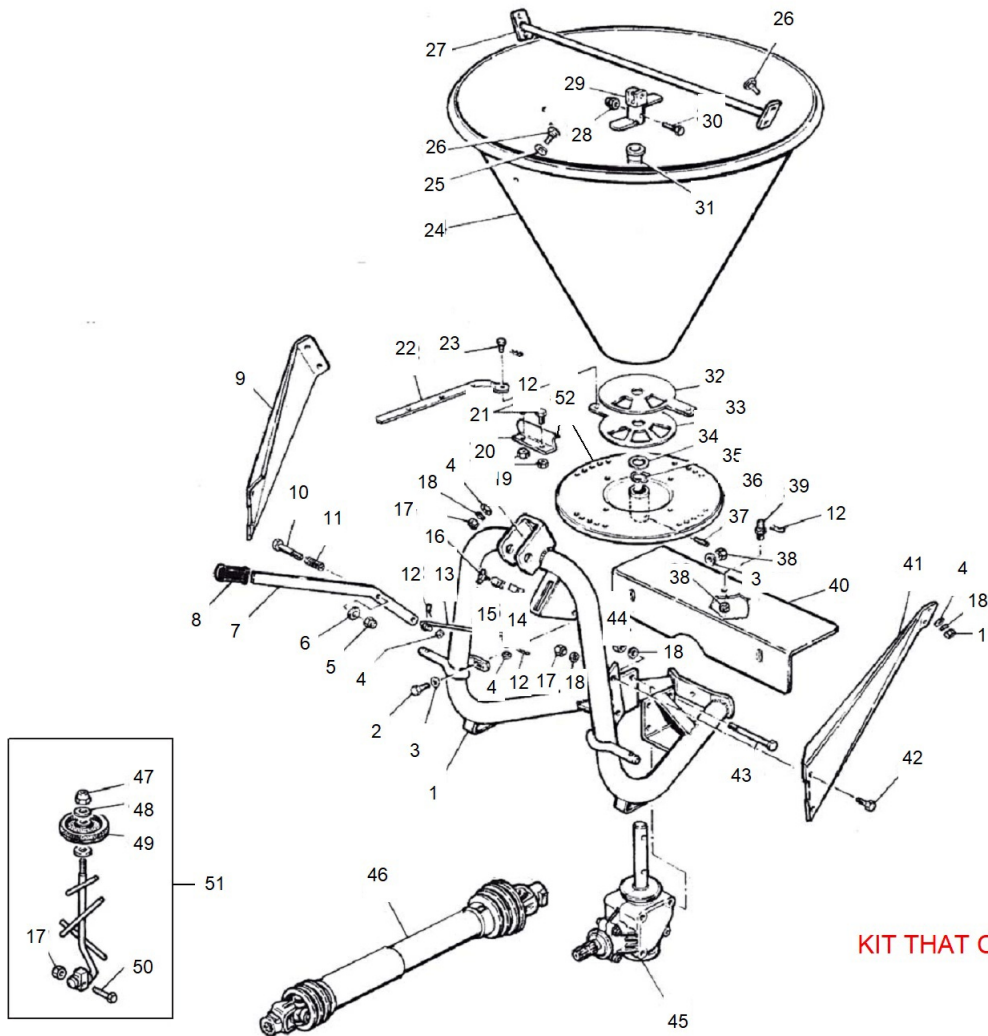
SX SERIES LINKAGE GALVANISED



**TPL SPREADER
GALVANISED**

Part No.

SX-500



KIT THAT COMES WITH SPREADER

SX SERIES LINKAGE GALVANISED

N.	Code	Description	Qty	EAN CODE
1	XA25-11-00	***FRAME MAIN XA SPREADER	1,00	0000000284721
2	BM8L16	BOLT ONLY 8X16 4.6 ZP	0,00	9327602048393
3	WM8FT	WASHER FLAT M8X17X1.2 ZP	0,00	9327602023048
4	WM10FT	WASHER FLAT 10 X 21 ZP	0,00	9327602034006
5	NM10NY	NUT NYLOC M10 ZP DIN985	0,00	9327602032620
6	PA25-10-27	BAKERLITE WASHER	1,00	9327602118447
7	XA25-10-10	HANDLE	1,00	9327602162396
8	IMGO-08-20	HANDLE	1,00	9327602025455
9	XA25-10-08	SUPPORT-RIGHT SIDE	1,00	9327602144712
10	BM10L65	BOLT ONLY 10X65 4.6 ZP	0,00	9327602084889
11	PA25-10-26	SPRING	1,00	9327602118416
12	8010-02-50	R-CLIP 2.0MM	4,00	9327602121546
13	PA25-10-17	ADJUSTMENT BAR	1,00	9327602117693
14	PA25-10-24	FIXING SQUARE	1,00	9327602011793
15	PA25-10-25	INDICATOR	1,00	9327602058910
16	5449-06-16	BOLT M6X16	1,00	9327602018044
17	NM10	NUT HEX STD M10 ZP	0,00	9327602053816
18	WM10SP	WASHER SPRING 10MM ZP	0,00	9327602008380
19	NM8	NUT HEX STD M8 ZP	0,00	9327602048973
20	PA25-10-23	BLADE-DIST XA/FS PAINTED	4,00	9327602011663

SX SERIES LINKAGE GALVANISED

N.	Code	Description	Qty	EAN CODE
21	5139-08-16	SCREW TF8 X 16	4,00	9327602022782
22	XA25-10-07	BAR FLOW ADJUSTMENT ROD REF22	1,00	9327602162389
23	PA25-10-14	CLEVIS PEN	1,00	9327602058156
24	XA25-10-25GAL	HOPPER GALVANISED 500L	1,00	0000000284707
25	WM10FT	WASHER FLAT 10 X 21 ZP	0,00	9327602034006
26	5732-10-25	***BOLT 10MX25	6,00	9327602119277
27	XA25-10-11	BAR-INNER HOPPER (XA/FS SERIES)	1,00	0000000284639
28	NM8NY	NUT NYLOC M8 ZP DIN985	0,00	9327602044364
29	XA25-10-02	AGITATOR	1,00	9327602035645
30	BM8L45	BOLT ONLY 8X45 4.6 ZP	0,00	9327602028982
31	PA25-10-16	STIRRER BUSH-GUIDE	1,00	9327602022140
32	PA25-10-18A	DOSING DISC 2 HOLE S/STEEL TSP TS	1,00	9337027036929
33	PA25-10-19A	DOSING DISC 3 HOLE STAINLESS STEEL	1,00	9337027036936
34	PA25-10-21	SHIM FS REF11	1,00	9327602132207
35	7435-32-00	CIRCLIP-EXTERNAL	1,00	9327602021037
36	PA25-10-10	SPREADING DISC PAINTED	1,00	9327602020641
37	6873-08-40	PIN 8X40	1,00	9327602016897
38	NM8	NUT HEX STD M8 ZP	0,00	9327602048973
39	XA25-10-14	STUD-FIXING	1,00	9327602038738
40	XA25-10-01	PROTECTION COVER	1,00	9327602035362

SX SERIES LINKAGE GALVANISED

N.	Code	Description	Qty	EAN CODE
41	XA25-10-09	SUPPORT-LEFT SIDE	1,00	9327602144750
42	BM10L25	BOLT ONLY 10X25 4.6 ZP	0,00	9327602015012
44	NM10	NUT HEX STD M10 ZP	0,00	9327602053816
45	XA25-10-16	GEARBOX ASSY XA MK2	1,00	9327602039285
46	C101-07-00	DRIVESHAFT SITREX SX-500	1,00	9327602042902
47	NM12NYSS	NUT NYLOC M12 304SS	1,00	9327602199163
48	WM12FTSS	WASHER FLAT 12X20 304SS	1,00	9327602199156
49	388-400201	WHEEL-RUBBER PX20	1,00	9337027031580
50	BM10L60HT	BOLT ONLY 10X60 8.8 ZP	1,00	0000000174336
51	PAX20	AGITATOR ASSY SX	0,00	9327602036512
52	XA25-10-46	SPINNER ASSY W/BLADES COMPL.	1,00	0000000284714
53	420-400196	KIT-SCREW NUT AND ACCESS	1,00	9327602171695
54	001-835	DECAL - KIT COMPLETE SX SPREADER	1,00	9327602317703